

MultiSTEEL Tubular

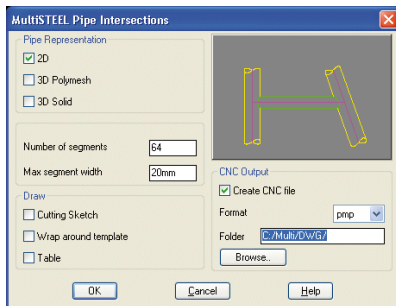
Tube & pipe connection module

The MultiSTEEL concept

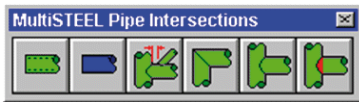
MultiSTEEL is more than a productivity tool for AutoCAD. It also provides many industry specific design aids to allow us to solve your design problems, increase your drawing efficiency and assist right through to the fabrication process. The accurate drafting and detailing of Tubular/pipe connections is a typical example. This software extension provides all of the tools necessary to achieve:-

- A high standard of drawing presentation
- Precise geometry in various output formats
- Optional CNC control of fabrication machinery

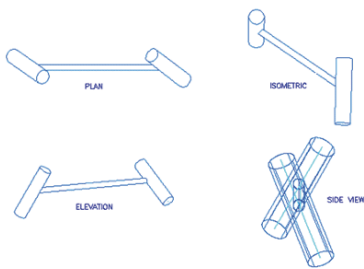
All of this can be achieved in a few minutes with MultiSTEEL



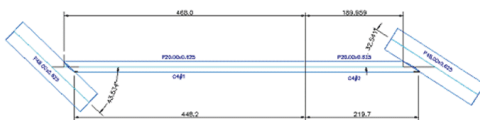
Tubular/Pipe dialogue makes it easy to select design options



Editing options include gap, mitre, cutback, and clean-up commands



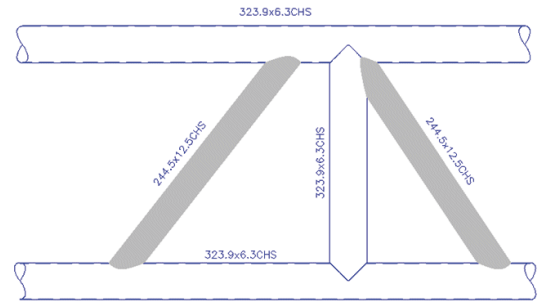
Any orientations of pipe sections is allowed in any 3D axis



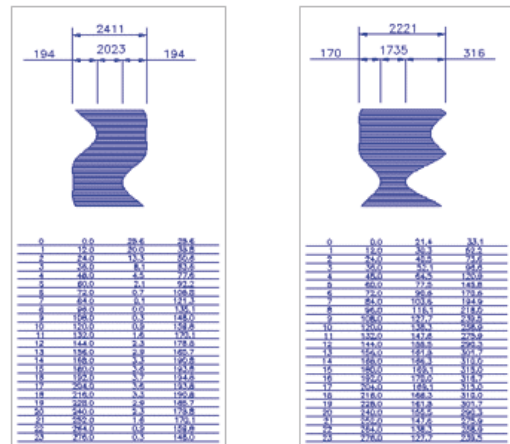
Bracing sketches aid the fabrication and assembly process and can be customised to suit individual requirements.

Output Options

For maximum flexibility this module can be configured to your exact requirements. It presents a number of options to allow you to achieve the required drawing style and output of results in the most convenient format.



Typical tubular/pipe GA showing accurate cutbacks into any complex connection. End profiles for the shaded pipes are shown below.



Wrap Around Templates and Table Offsets

AutoCAD Platforms Supported

MultiSTEEL 3D is available for all current versions of AutoCAD including Mechanical and Architectural Desktop

MultiSTEEL CAD is also available as a fully self-contained CAD package powered by AutoCAD® OEM technology.

Network versions available. Only MultiSTEEL 3D provides truly flexible licensing across all AutoCAD platforms.



All logos and product names are trademarks of their respective owners